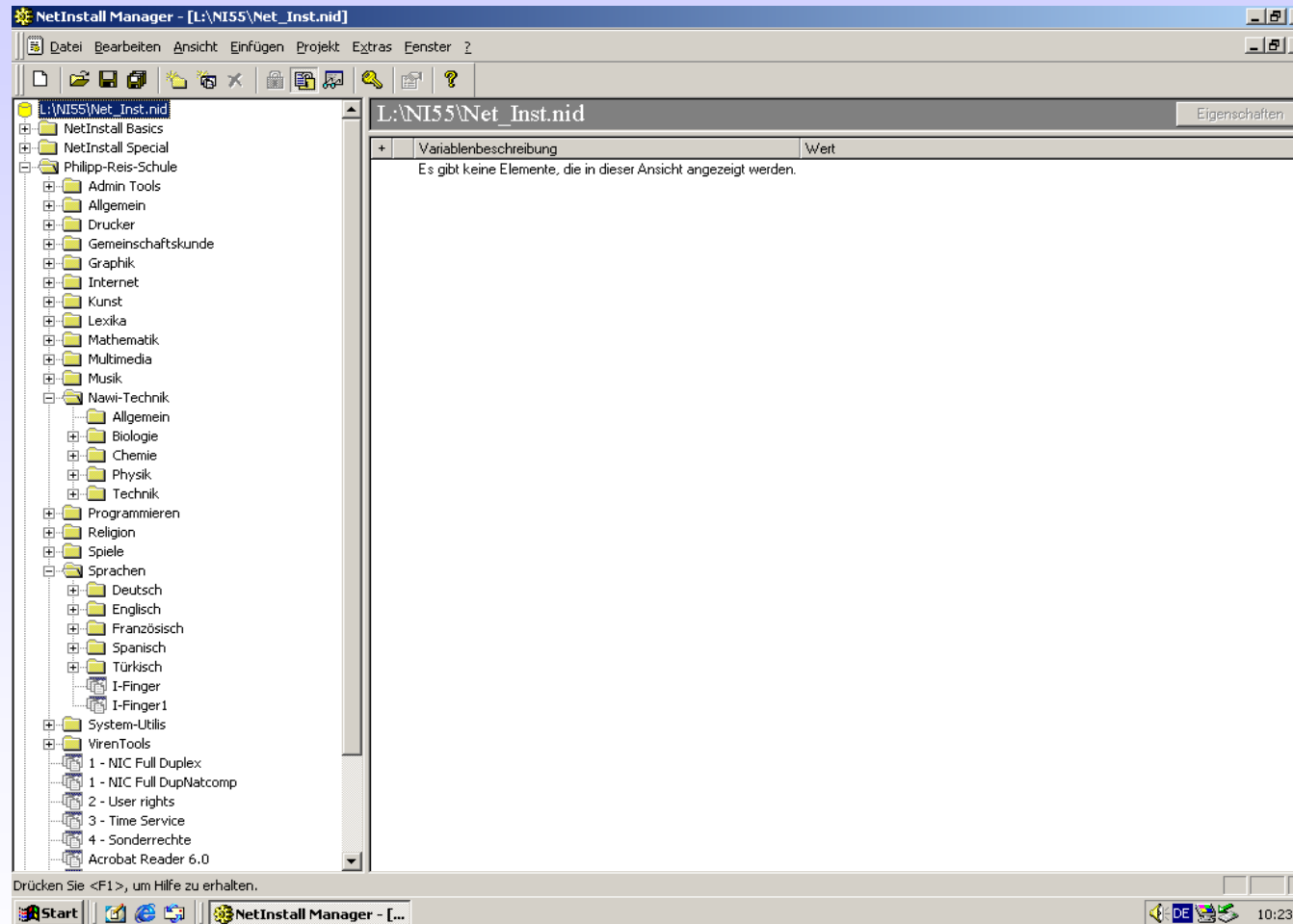
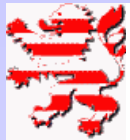


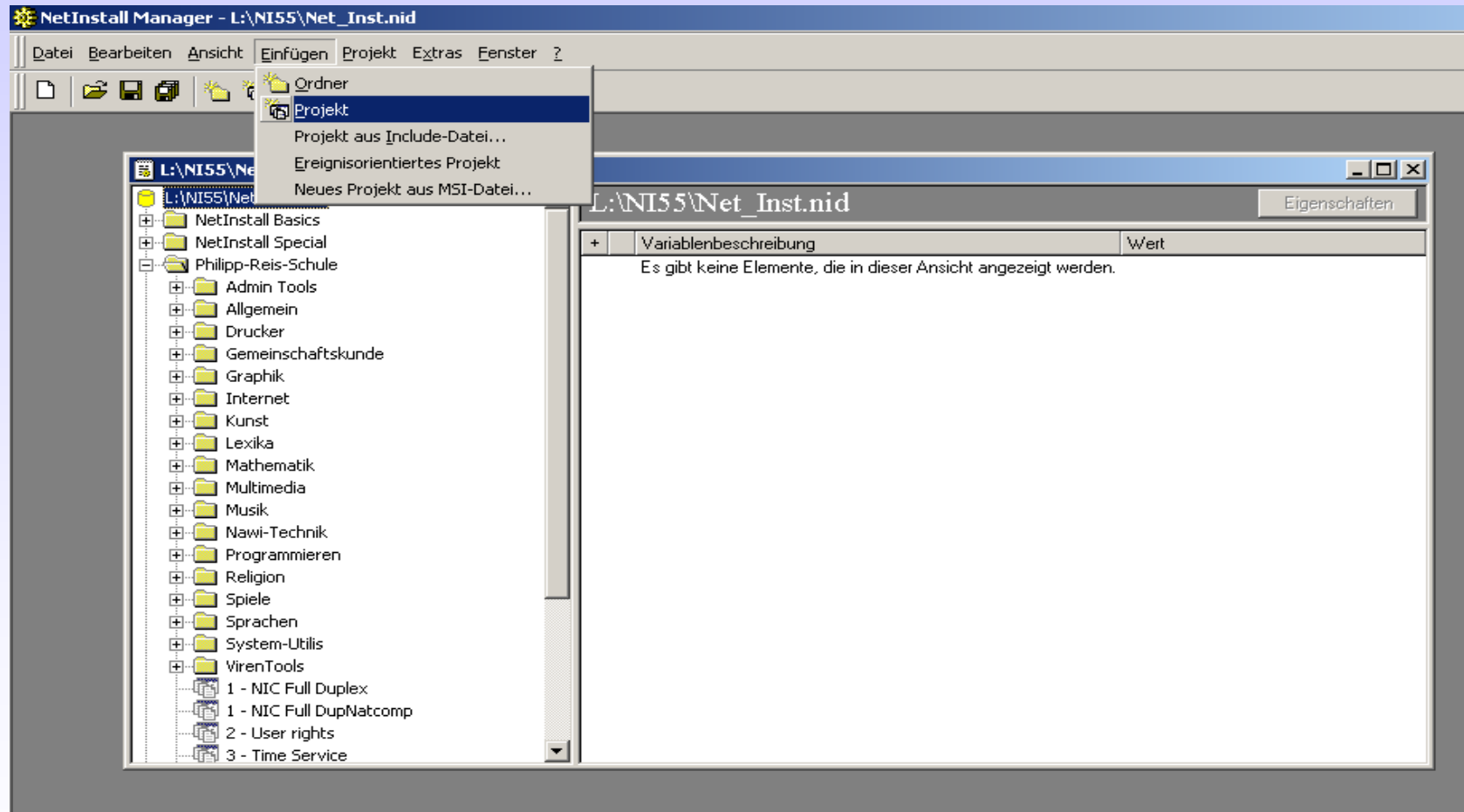


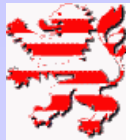
Beispiel einer Projektstruktur



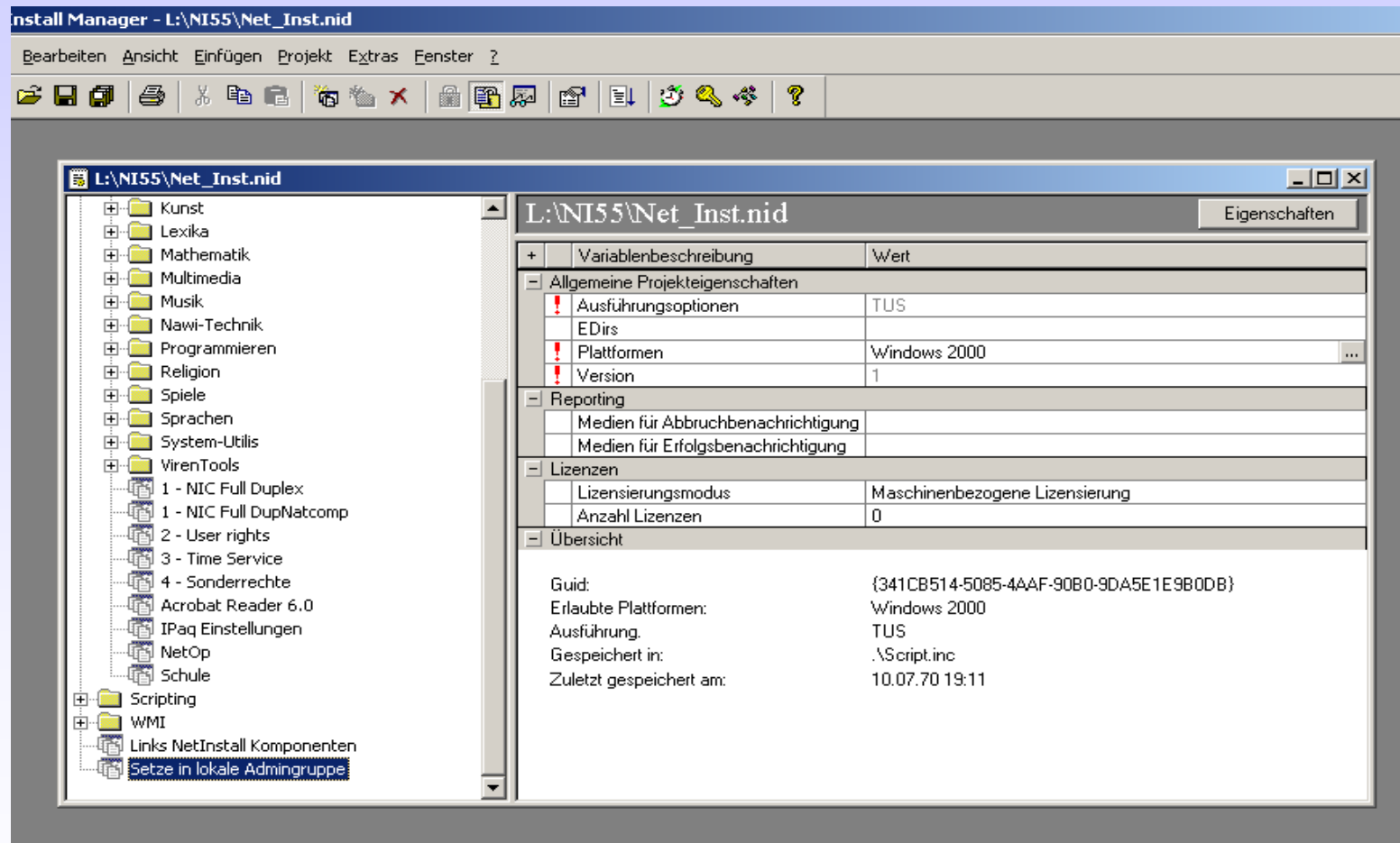


Scripterstellung „User in Admingruppe“



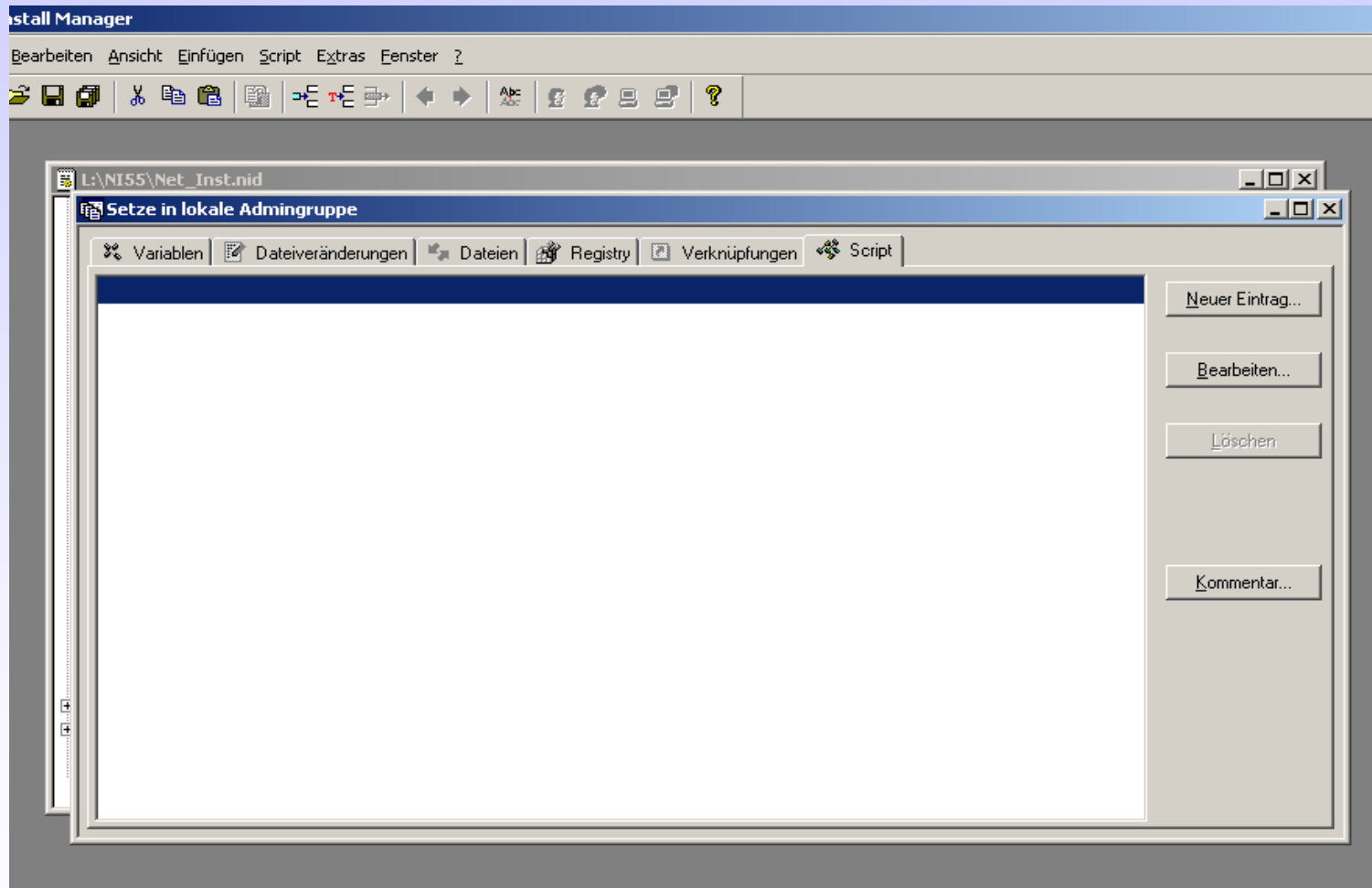


Scripterstellung „User in Admingruppe“



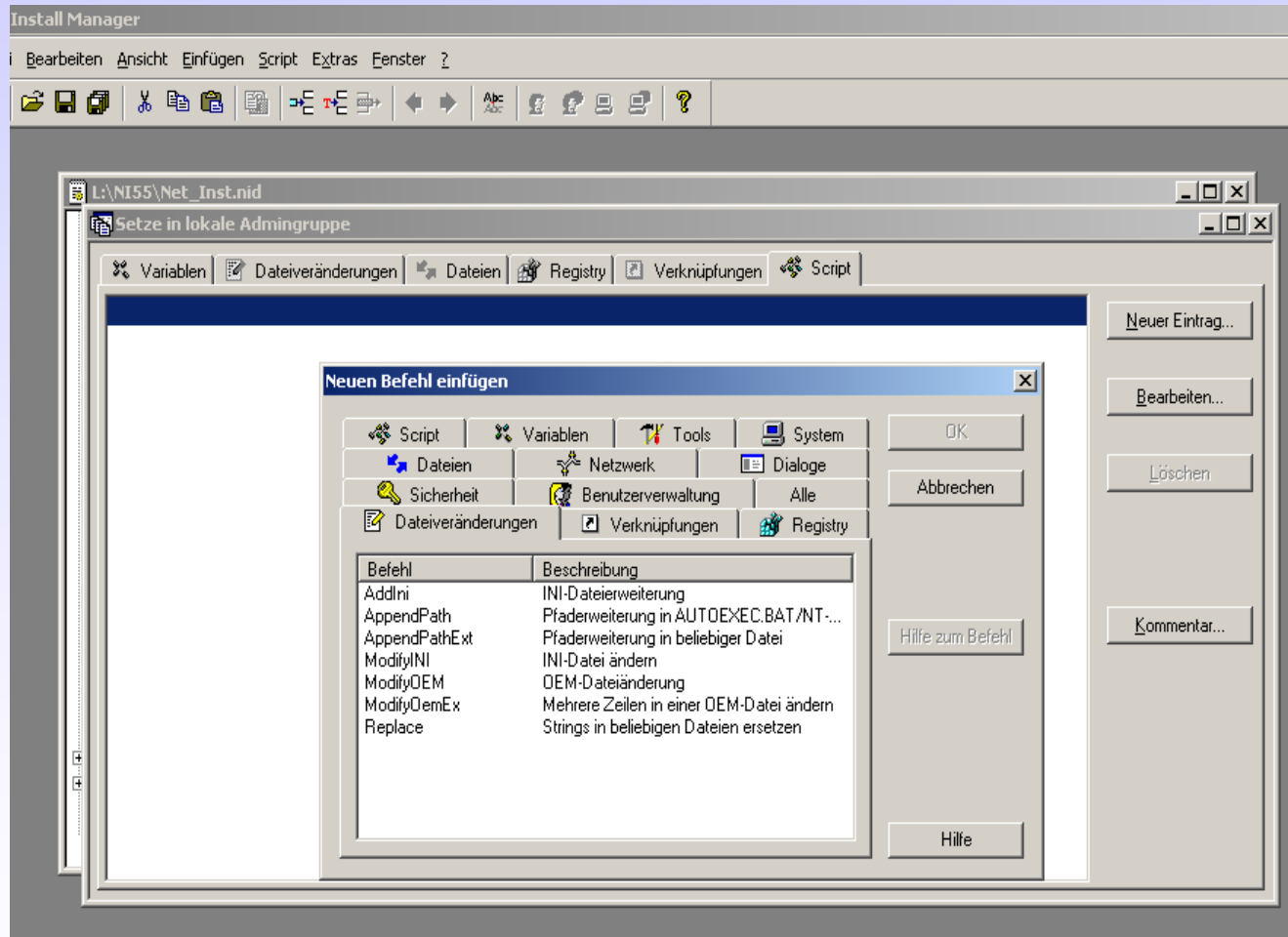


Scripterstellung „User in Admingruppe“



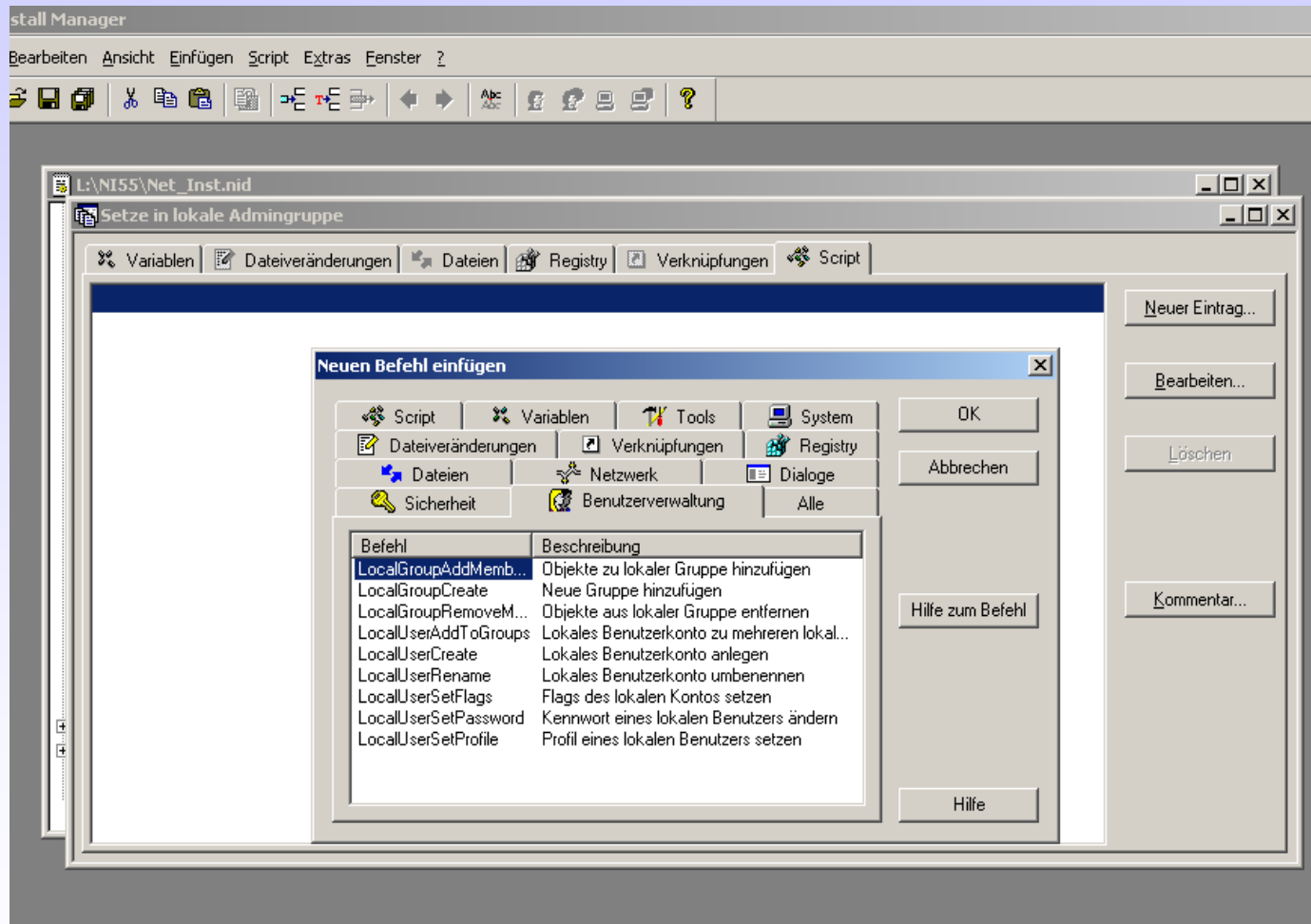


Scripterstellung „User in Admingruppe“



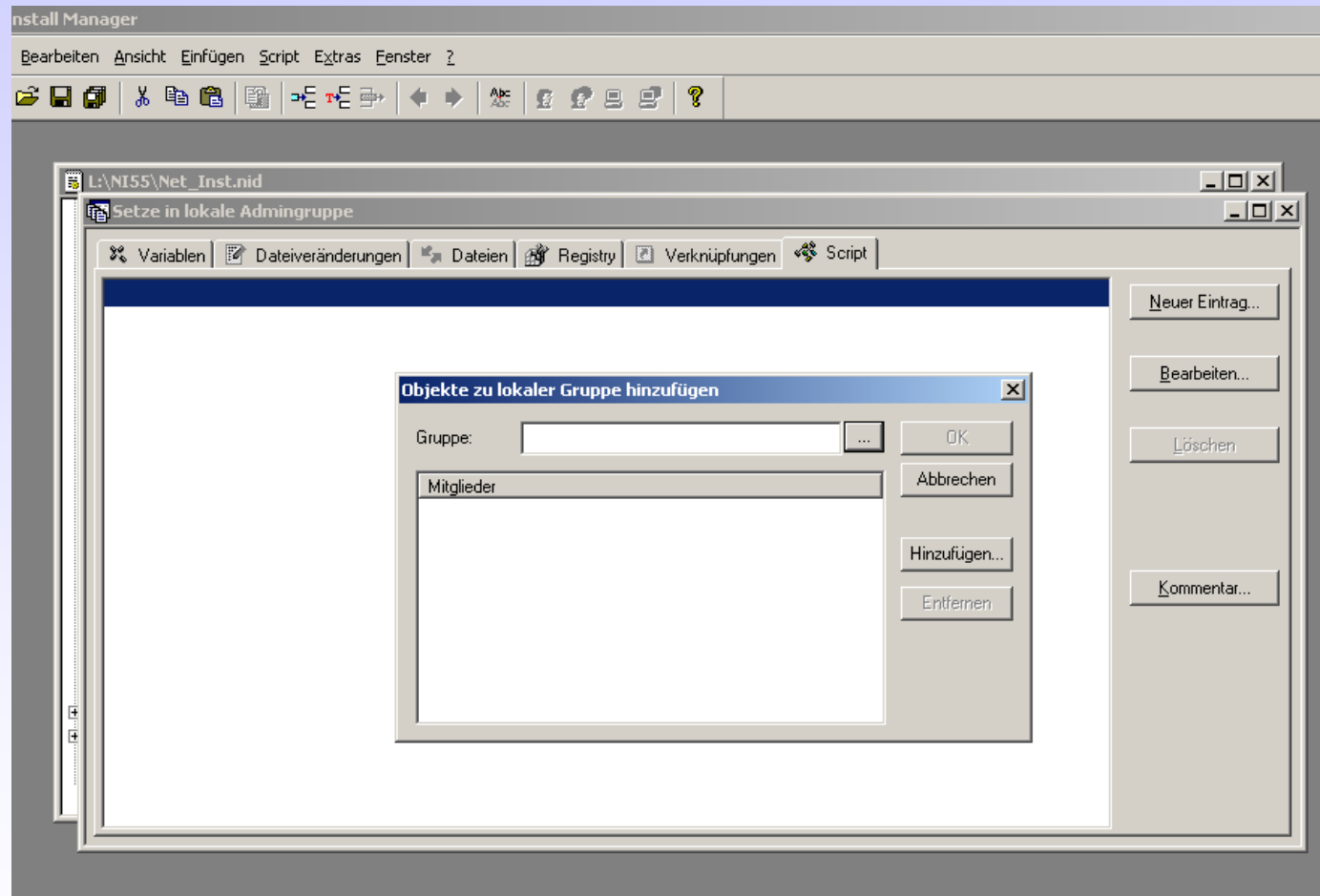


Scripterstellung „User in Admingruppe“



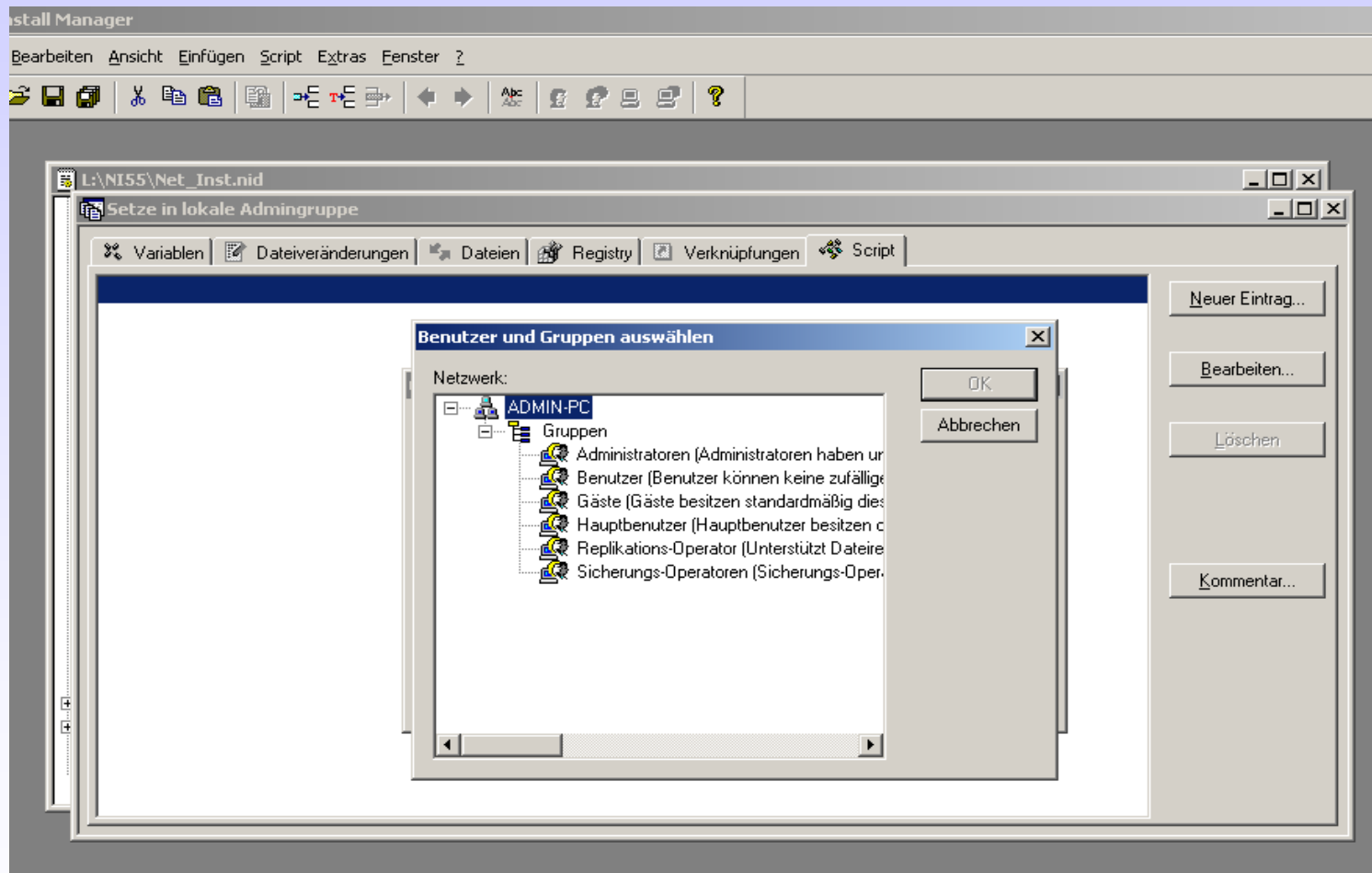


Scripterstellung „User in Admingruppe“



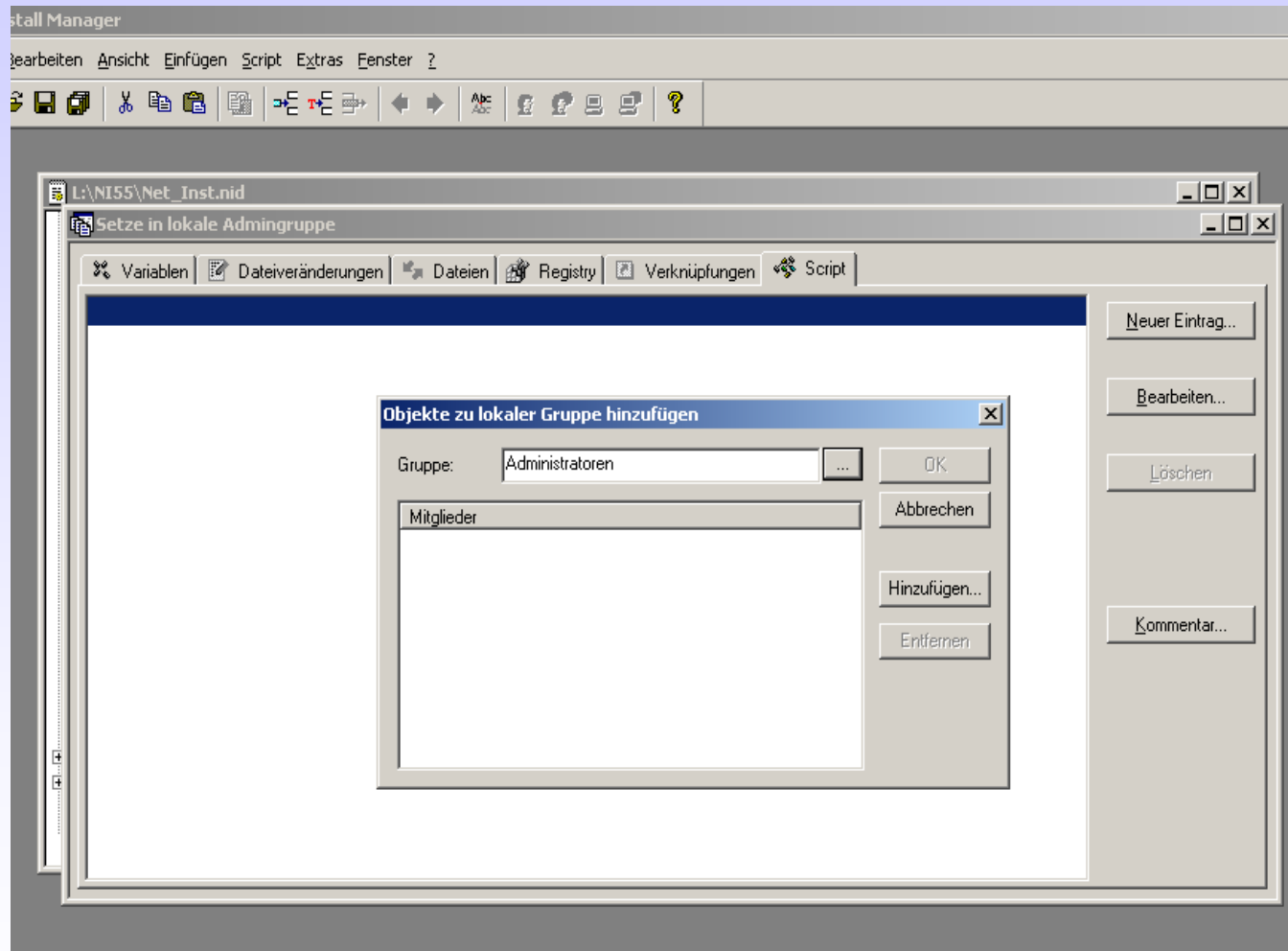


Scripterstellung „User in Admingruppe“



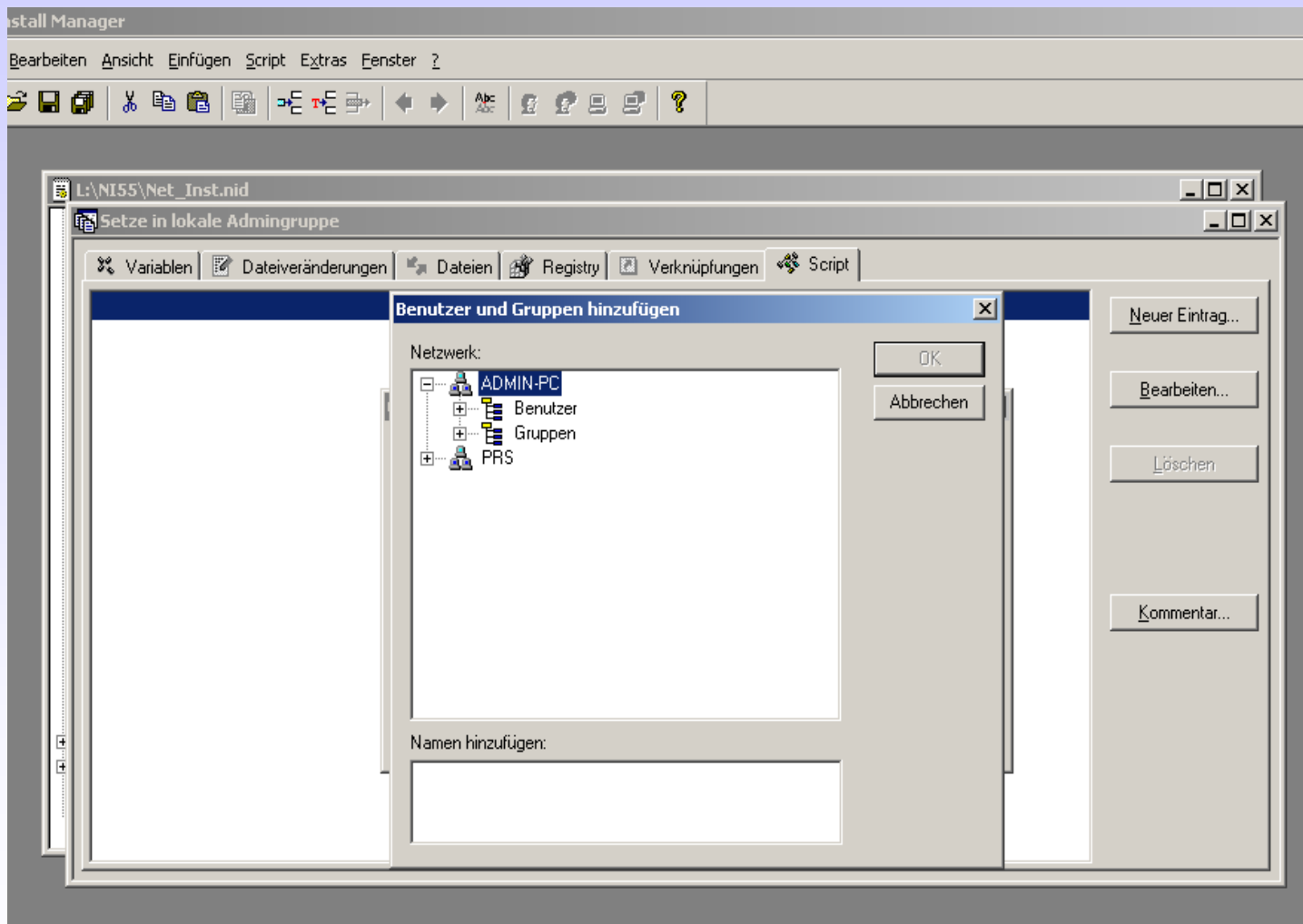


Scripterstellung „User in Admingruppe“



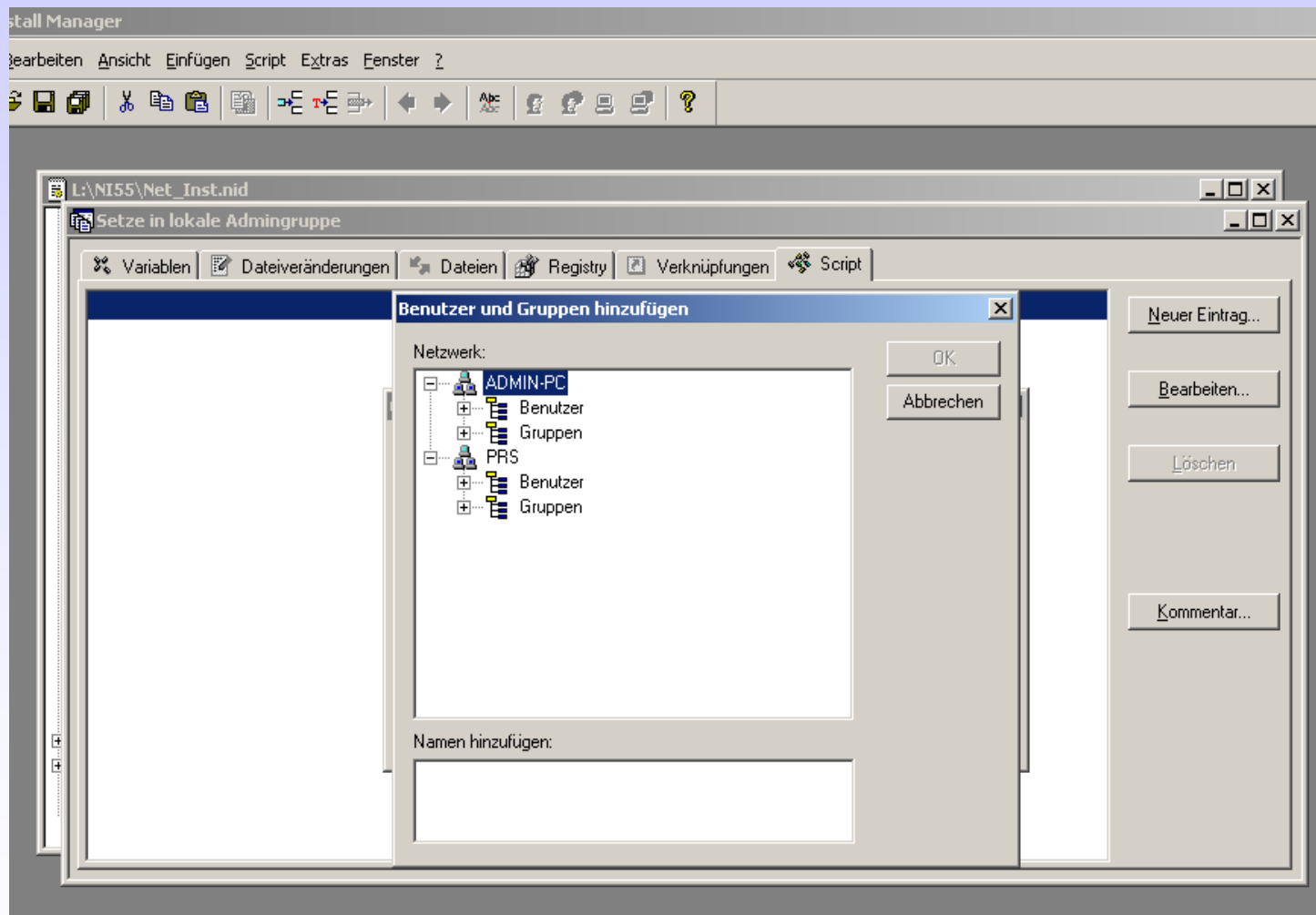


Scripterstellung „User in Admingruppe“



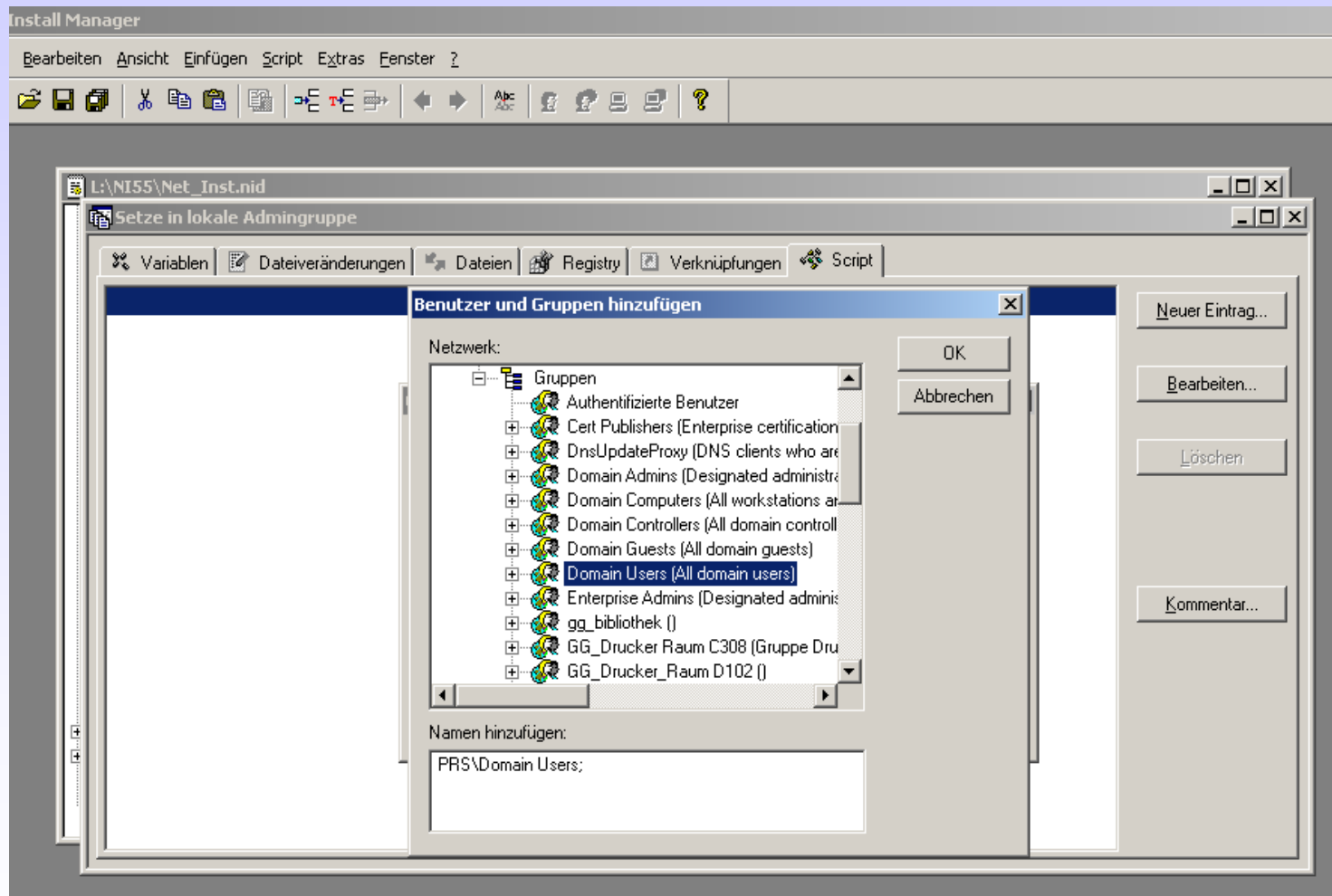


Scripterstellung „User in Admingruppe“



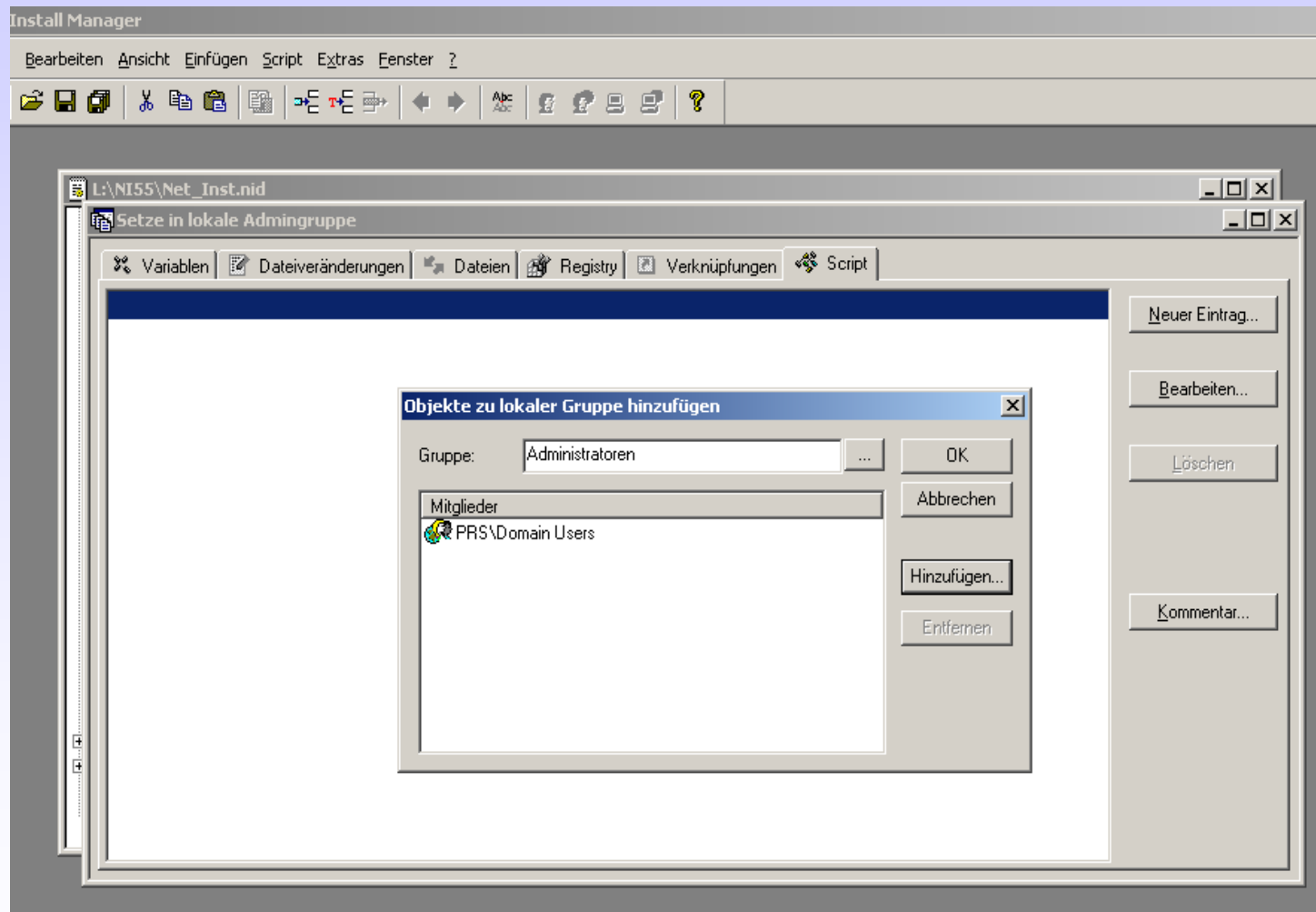


Scripterstellung „User in Admingruppe“



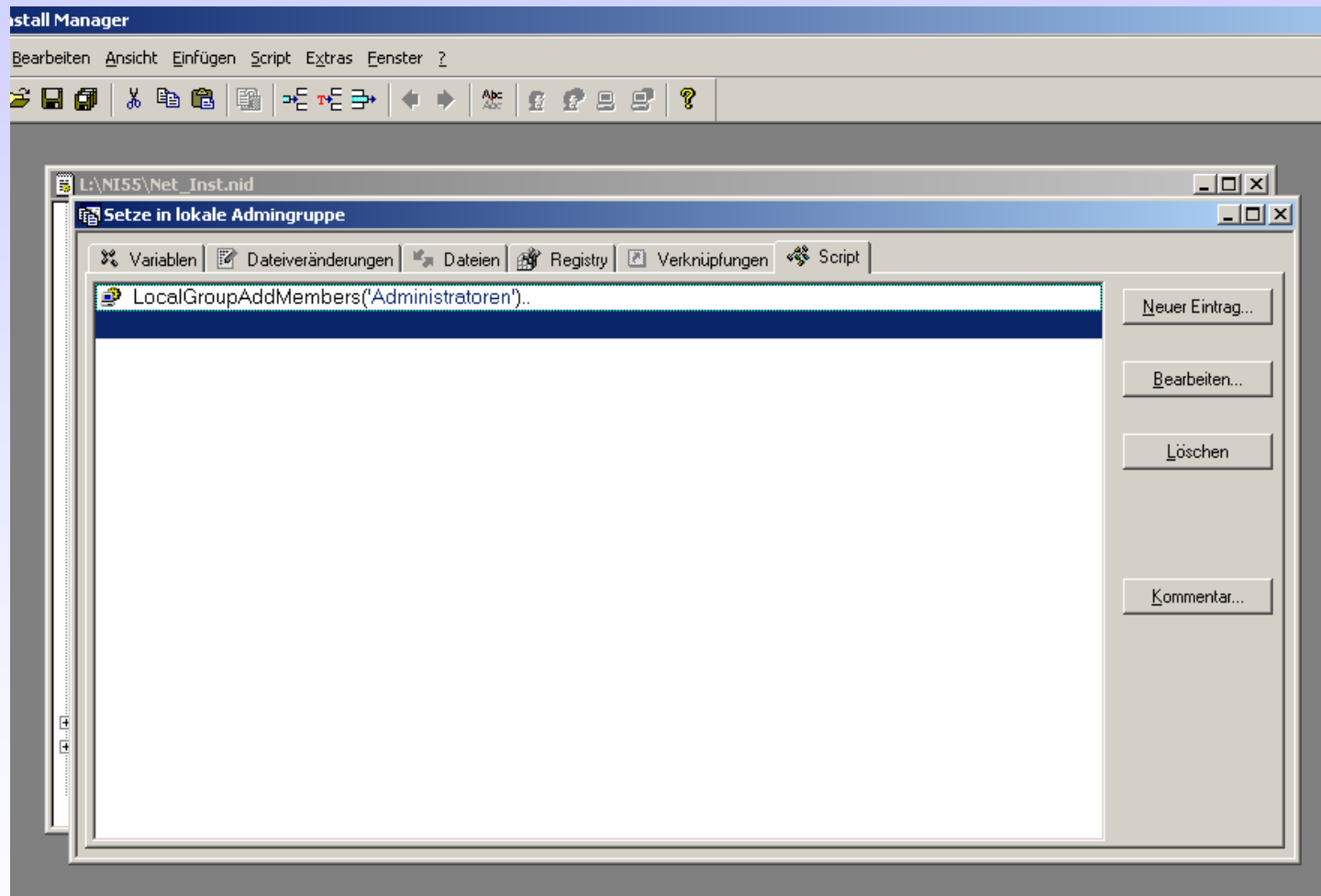


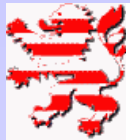
Scripterstellung „User in Admingruppe“



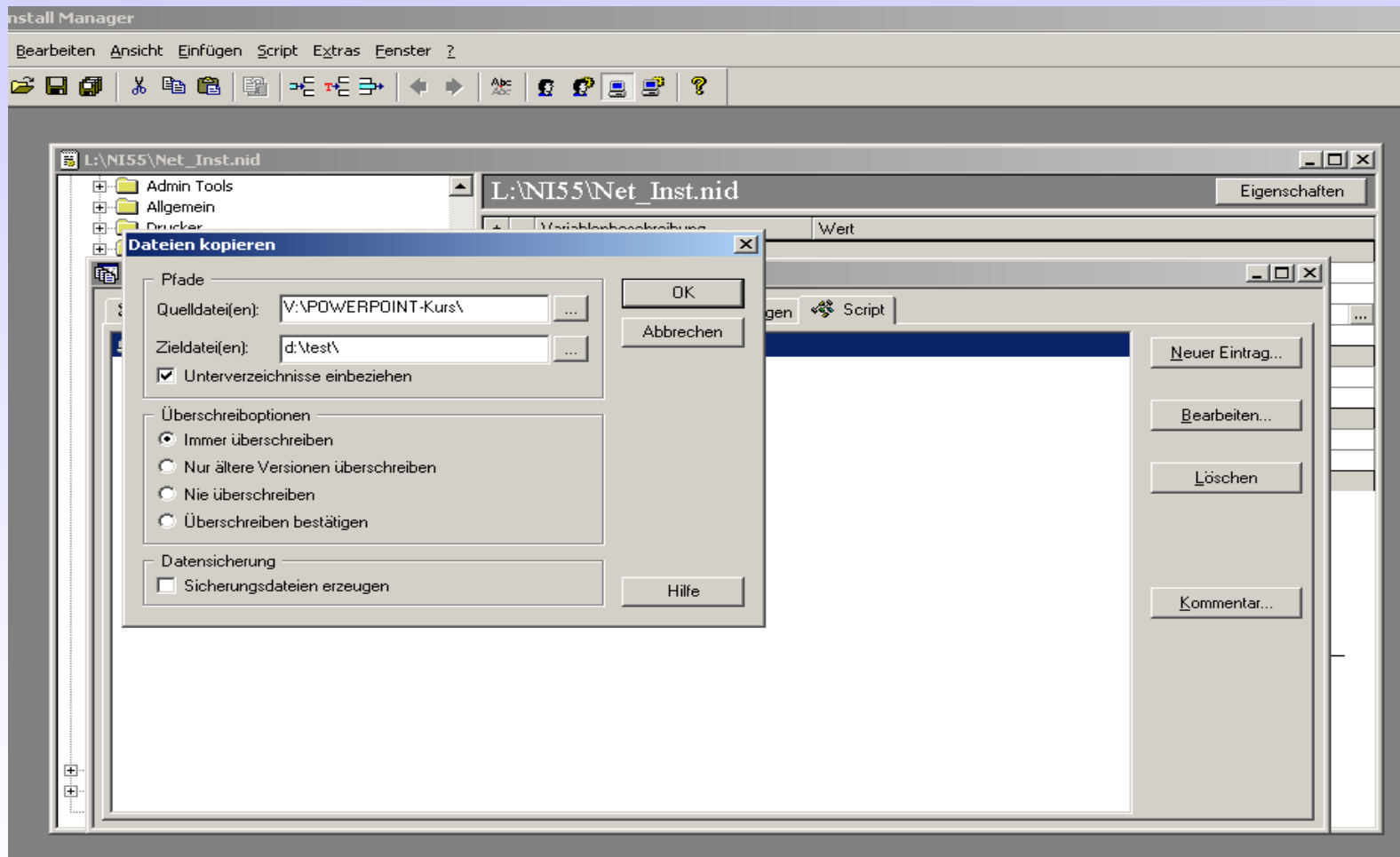


Scripterstellung „User in Admingruppe“



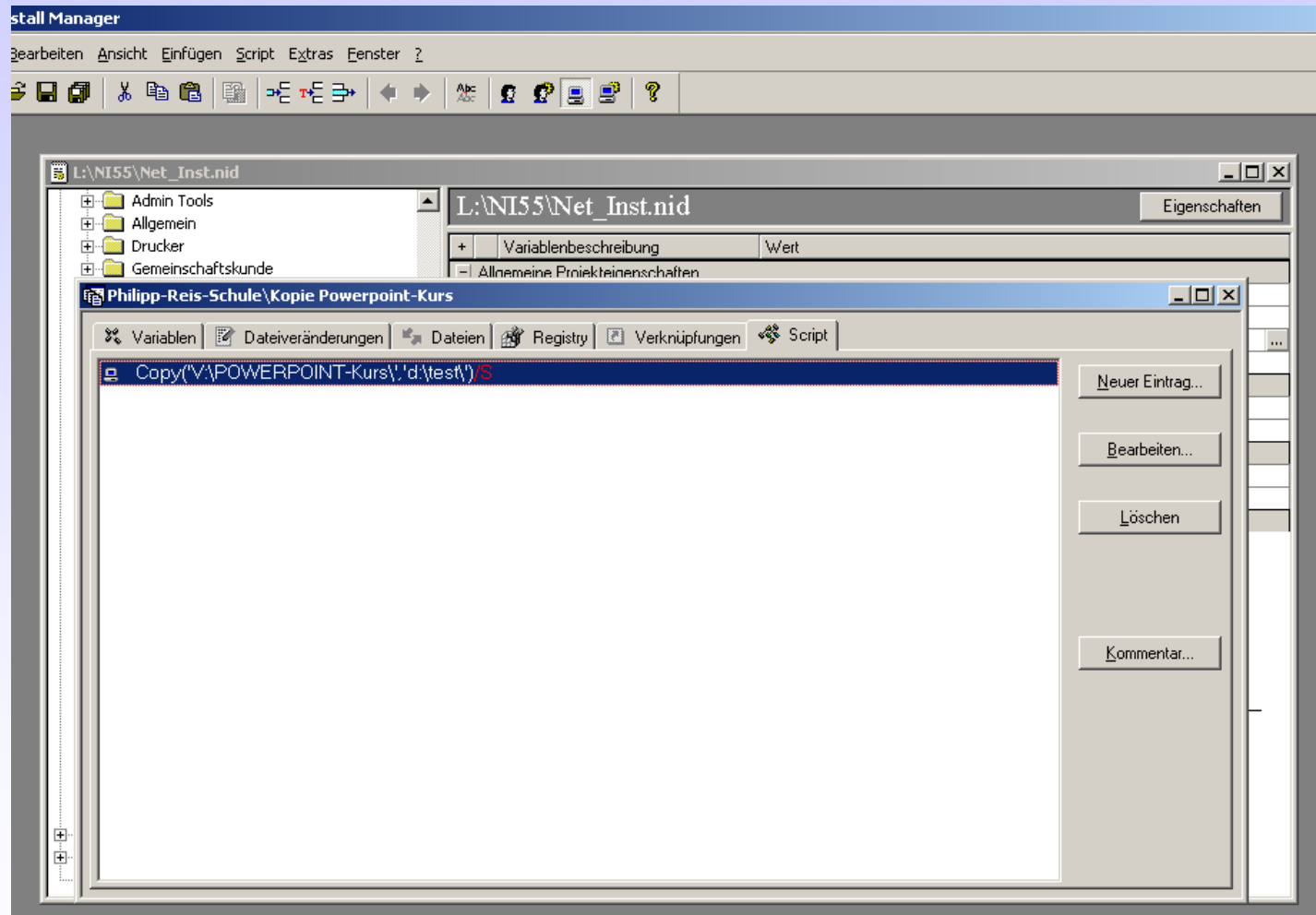


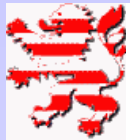
Scripterstellung „Verzeichnis kopieren“





Scripterstellung „Verzeichnis kopieren“





Scripterstellung „Verzeichnis kopieren“

The screenshot shows the NetInstall Manager interface. The left pane displays a tree view of folders and scripts, with 'Kopie Powerpoint-Kurs' selected. The right pane shows the properties for this script, including a table of variables and a script code block.

Variablenbeschreibung	Wert
Allgemeine Projekteigenschaften	
Ausführungsoptionen	TUS
EDirs	
Plattformen	Windows 2000
Version	1
Reporting	
Medien für Abbruchbenachrichtigung	
Medien für Erfolgsbenachrichtigung	
Lizenzen	
Lizenzierungsmodus	Maschinenbezogene Lizenzierung
Anzahl Lizenzen	0
Übersicht	
Guid:	{AD3B2B7F-A85E-480F-8122-AC9FC35CF6B1}
Erlaubte Plattformen:	Windows 2000
Ausführung:	TUS
Gespeichert in:	.\Script.inc
Zuletzt gespeichert am:	24.05.04 10:36

Script

```
Copy(V:\POWERPOINT-Kurs\;d:\test\)/S/TW
```